

TRAINING DAYS

Sponsored by GIS247.com

LATEST EDUCATIONAL INFORMATION ON TRAINING COURSES, DISTANCE LEARNING; COMPANY TRAINING DAYS, SEMINARS WORKSHOPS CURRENTLY AVAILABLE. THIS SECTION WILL ALSO INCLUDE COMPETITIONS, STUDENT OFFERS AMONG OTHER EXCITING OPPORTUNITIES.

SNOWFLAKE SOFTWARE TRAINING

Contact training@snowflakesoftware.com for details or visit www.snowflakesoftware.com/training/



DATE	TUESDAY	WEDNESDAY	THURSDAY/FRIDAY
July			
12 th – 15 th	INSPIRE Essentials	GML Fundamentals	GML Hands On (2 days)
26 th – 29 th	XML Primer	GML Fundamentals	GML Hands On (2 days)
August			
2 nd – 5 th	INSPIRE Essentials	GML Fundamentals	GML Hands On (2 days)
16 th – 19 th	XML Primer	GML Fundamentals	GML Hands On (2 days)
September			
6 th – 9 th	INSPIRE Essentials	GML Fundamentals	GML Hands On (2 days)
20 th – 23 rd	XML Primer	GML Fundamentals	GML Hands On (2 days)

To include your Company Seminar/Training dates, or University Courses in this section, please ring:

Micki: + 44 (0) 01638 732566
Mai: + 44 (0) 1223 279151



GIS247 DEMO HIGHLIGHTS THE COMPLETE GIS TRAINING SOLUTION

GIS247 is the e-learning solution that trains ALL GIS users from many organisations across the UK and beyond.

We recently held a webinar, during which we demonstrated how GIS247 is more than a comprehensive source of e-learning material. Thank you to the many who attended the webinar but if you were unable to join us, you can now view the webinar from the home page of our website, www.gis247.com.

The webinar illustrates the complete learning environment provided by GIS247 and how it assists managers provide training to their users. GIS247 enhances its vast library of training courses and technical modules with a Learning Management System (LMS) that tracks user progress through courses. This aids individual development and provides managers with

an easy-to-access and easy-to-understand method for tracking individual skill development. For example, a manager just has to click on a user's name to view that user's entire GIS247 training history.

The webinar also illustrates how multiple user accounts (some of our customers have over 200 users) can be



grouped together for simple management. These groups can be assigned their own training objectives with access to courses controllable at the group level. Course access can also be controlled at the individual user level giving a highly tailored approach, helping guide users to the courses determined as suitable for their needs.

We believe that GIS247 provides the most flexible, cost-effective and comprehensive approach to GIS training available. For more information, please visit www.gis247.com to view the webinar or email the GIS247 Training Manager, debbie@gis247.com.

CLARK LABS AND UNIGIS RENEW LONGSTANDING PARTNERSHIP AND SOFTWARE AGREEMENT

Clark Labs at Clark University and UNIGIS International are pleased to jointly announce their continued partnership to provide students with access to GIS technology.

UNIGIS is the leading worldwide network of universities that offers postgraduate Geographic Information Science and Technology education via open and distance learning. Dedicated to enhancing the competence and skills of GIS professionals,

UNIGIS, through its partner institutions from all over the world, offer internationally recognized study programs and qualifications. The UNIGIS network is built on the advanced expertise of specialist faculty at partner universities where each year more than 600 students are enrolled. Universities within the UNIGIS partnership offer the opportunity to graduate with an MSc in GIScience or postgraduate certificates / professional diplomas in GIS.



Training that is relevant, cost-effective and enjoyable

ARCGIS TRAINING COURSES – SALFORD		MAPINFO TRAINING COURSES – SALFORD	
ArcView 10 Advanced	16 th & 17 th June	MapInfo 10.5 Intro	7 th & 8 th June
ArcView 10 Intro	21 st & 22 nd June	MapInfo 10.5 SQL	23 rd June
ArcView 10 Intro	13 th & 14 th July	MapInfo 10.5 Intro	5 th & 6 th July
ArcView 10 Intro	13 th & 14 th Sept	MapInfo 10.5 Advanced	21 st July
ArcView 10 Advanced	20 th & 21 st Sept	MapInfo 10.5 Intro	6 th & 7 th Sept

See www.salford-gis.co.uk for further details, or call 0161 278 2440. Bespoke courses and GIS Lifebelt online tutorials also available.

GAIN THE SKILLS YOU NEED IN GEOSTATISTICS TO PRODUCE SUPERIOR MAPPING

Geovariances, the world leader in the application of geostatistics for the past 25 years, offers a complete set of public or in-house high quality training programs in geostatistics for beginners and geostatistics specialists around the world, and based on its software solution ISATIS®.

Training course:
Geostatistics for Reliable Mapping (3 days) - Start dates:
 10 Oct. 2011 (English sessions) - 6 June / 3 Oct. 2011 (French sessions).

More information at <http://www.geovariances.com/en/environment-geostatistics-for-reliable-mapping-co104>.

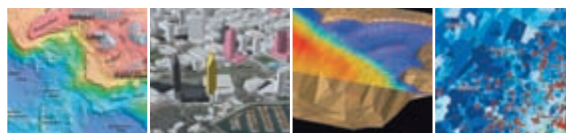


UNIGIS

Study for a postgraduate qualification in GIS by distance learning

UNIGIS is a partnership between Huddersfield, Manchester Metropolitan and Salford universities that delivers postgraduate GIS courses by distance learning. With over twenty years experience, and as a founder member of the prestigious UNIGIS International network, we provide high quality courses that meet the requirements of busy GI professionals and of those seeking to enter the GIS industry.

Our courses can be completed entirely by distance learning, although we also offer optional residential workshops. Assessment is by coursework only - there are no examinations. We support you with personal tutors, online help and a dedicated UNIGIS office.



WE OFFER:

- Flexible entry requirements
- Specialist pathways
- Course modules supported by key textbooks, software and on-line resources
- Flexible study - distance learning plus optional residential workshops
- No examinations - full continuous assessment, plus credit for prior learning or experience
- Networking with an international community of GIS professionals

Find out why the UNIGIS postgraduate courses are so successful: call +44 161 247 1581, fax. +44 161 247 6344, email unigis@mmu.ac.uk, or visit our web site at <http://www.unigis.org/uk>



Educating GIS Professionals Worldwide

www.unigis.org/uk